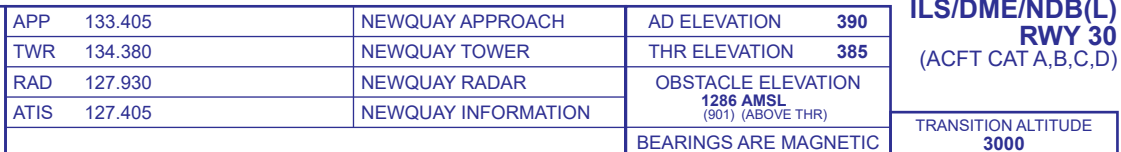


NEWQUAY
ILS/DME/NDB(L)
RWY 30
(ACFT CAT A,B,C,D)



RDH 51	IAF NDB/L NOY	CLIDE PATH 2°
--------	------------------	---------------

AIRCRAFT UNABLE TO RECEIVE DME
Advise ATC and continue as for normal procedure. Radar Ranges will be provided at 8NM outbound and at 4NM inbound.

NOTE ATC will normally require aircraft to hold no lower than **3500**.

CHANGE (13/25): MAG VAR UPDATED.